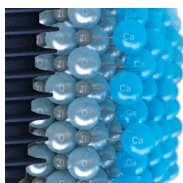
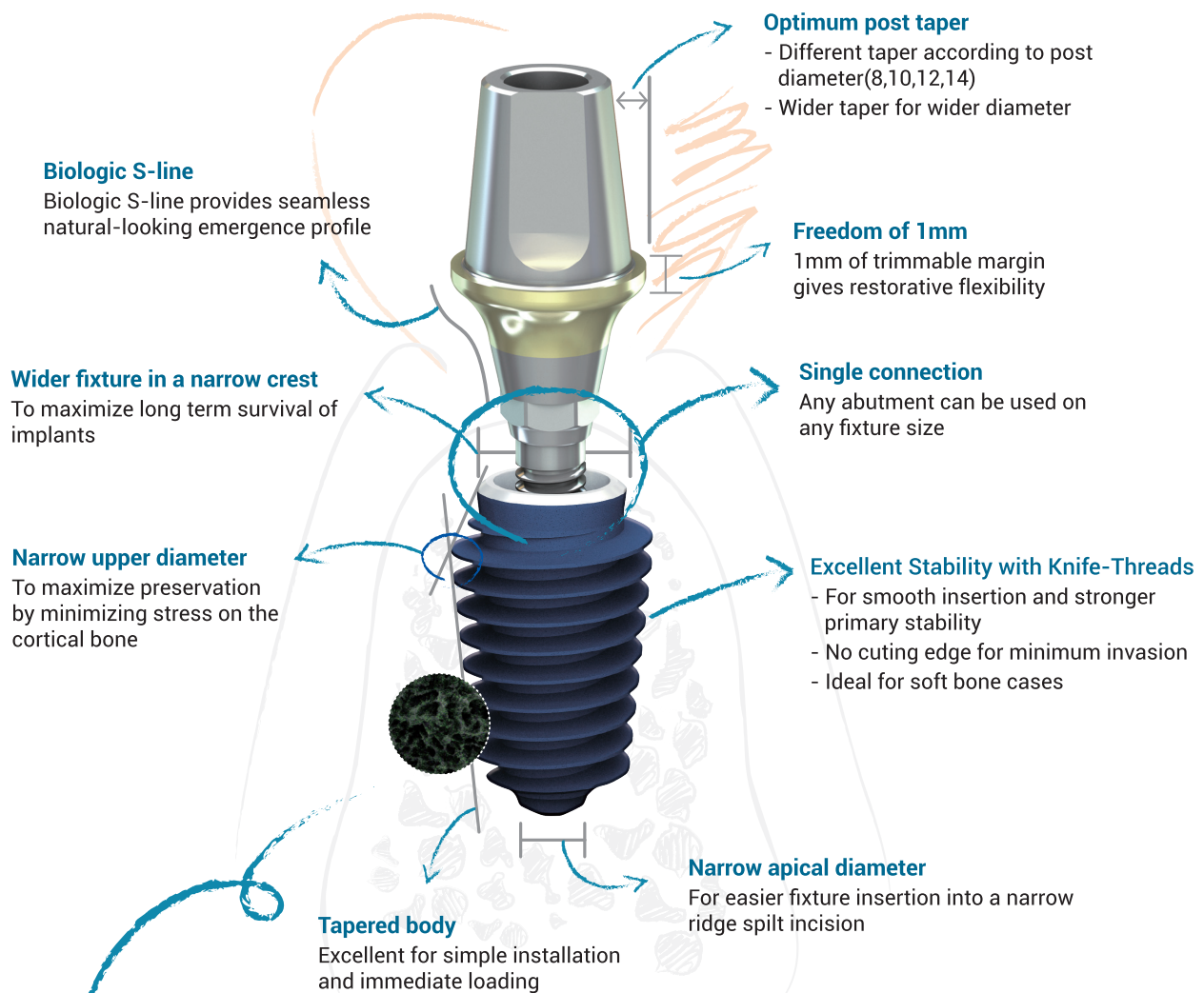


For Lifetime Smiles,
we offer One-stop Digital Implantology solutions
trusted over 12 years by 6M dentists and patients worldwide.

Why will ANYRIDGE[®] implant work in any ridge?

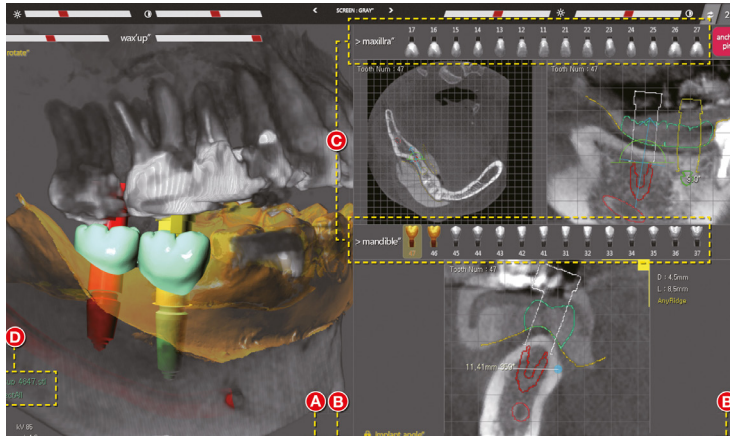
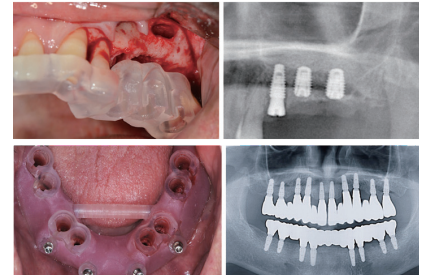


- For faster, stronger osseointegration
- New surface technology incorporating Ca²⁺ ions on the S-L-A treated surface
- 100% elimination of any remaining acid from the conventional S-L-A process

Surface treatment technology guarantees and excellent result

MegaGen developed the surface treatment based on S-L-A technique with calcium ion incorporation process. Calcium ion creates a CaTiO₃ nanostructure on the surface and activates osteoblasts in the living organisms. The name of this unique surface treatment is XPEED[®]

R2 GATE Surgical Guide



R2GATE is TRUSTED WORLDWIDE

Doctors are using R2GATE with **138,253 cases, 384,572 implants and 128,190 prosthesis*** in over 45 countries since 2013.

*counted in Nov 2021

Australia, China, Italy, Japan, Netherlands, South Korea, Romania, Taiwan, Turkey, Ukraine, UAE, UK, USA and more.

R2GATE surgical guide is called R2GUIDE

OPTIMAL INPLANT POSITIONING

R2GATE allows prosthetic driven treatment planning for optimal positioning of the implant. It perfectly integrates all necessary data (CBCT, STL, etc) into the ultimate surgical guide for surgery.

ULTIMATE TREATMENT PLANNING

The surgical guide is made using state of the art 3D printing technology based on the result of R2 treatment planning.

PRECISE

R2Guide is 3D printed directly from your diagnoses. The unique structure of R2 Guide (for drill stopper, implant position and hex control) are printed as one-body for improved precision and convenience.

CONVENIENT

No need to use metal sleeves or spoons. There is an internal structure for drill stopping and hex controlling, enabling convenient and precise surgery.

ONE DAY IMPLANT SERVICE

Prosthetics and implants in one visit.

WHENEVER, WHEREVER with R2LITE

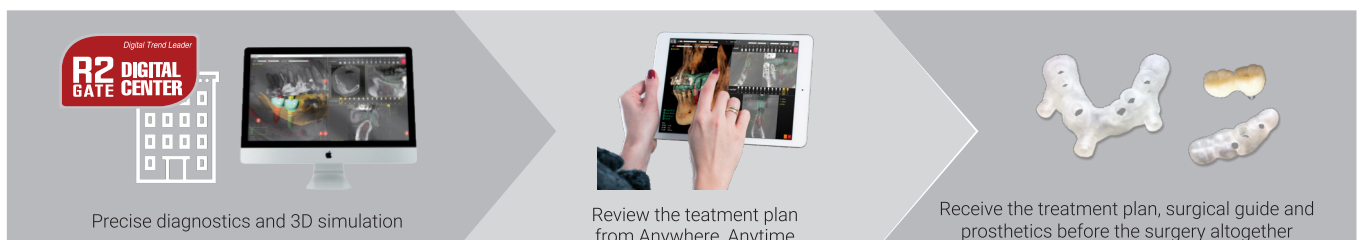
Receive, review and confirm patient treatment plan instantly on your iPad via R2Gate Lite app

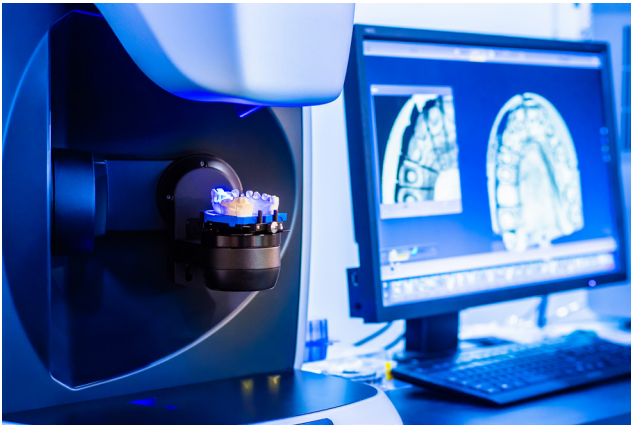


INTERGRATION with MAJOR IMPLANT SYSTEMS

R2Guide can be produced and used for all other major implant systems.

BioHorizon, Dentsply Sirona, Implant Direct, MIS Implants, Neodent, Nobel Biocare, Straumann, Zimmer Biomet, and more





ONE-STOP SOLUTION FOR DIGITAL DENTISTRY



Full-service local laboratory

established in Adelaide since 2009



Qualified technician team

highly experienced team of technicians



Latest digitalised work processes

update to the latest 3D scanner, 3D printing, and software



All on X

100% money-back guarantee for satisfied outcomes*
*T&Cs apply



3D Smile Design

support affordable fully digitalised technique



Trusted quality

use only high-quality materials from trusted suppliers



Free pick-up service

www.a2dental.com.au/contact

FREE trial for your first case

(1 crown and 1 denture)*

A2Dental is a full-service laboratory specialising in crowns, bridges, implants, dentures and partial frames with the latest digitalised work processes.

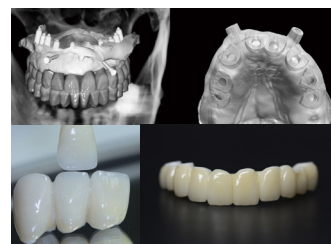
Our highly experienced team of technicians design, mill and produce in-house using fully digitalised equipment such as 3 Shape D2000 scanner, VHF S1, S2 milling machines, and 3D printers.

Finalising all dental lab works in house reduces turnaround time and eliminates outsourcing. We focus on innovation and technology to produce the best possible product for your patients at an affordable and competitive prices.

Our mission is to support dentists with fabrication and provision of exceptional dental prosthetic solutions. A2Dental lab values close relationships with dentists, providing technical supports, case discussions, technology improvements and more.

A2Dental lab works closely with suppliers and partners. Their support enables us to use high quality materials to deliver the best outcome for your patients.

*T&Cs apply



A2 Dental Group

08 8364 0162

0432 202 392

admin@a2dental.com.au

Unit 1, 233 Greenhill Rd.

DULWICH SA 5065