

Unwrapped
FAST / 134°C

9 min

Wrapped
Class B / 134°C

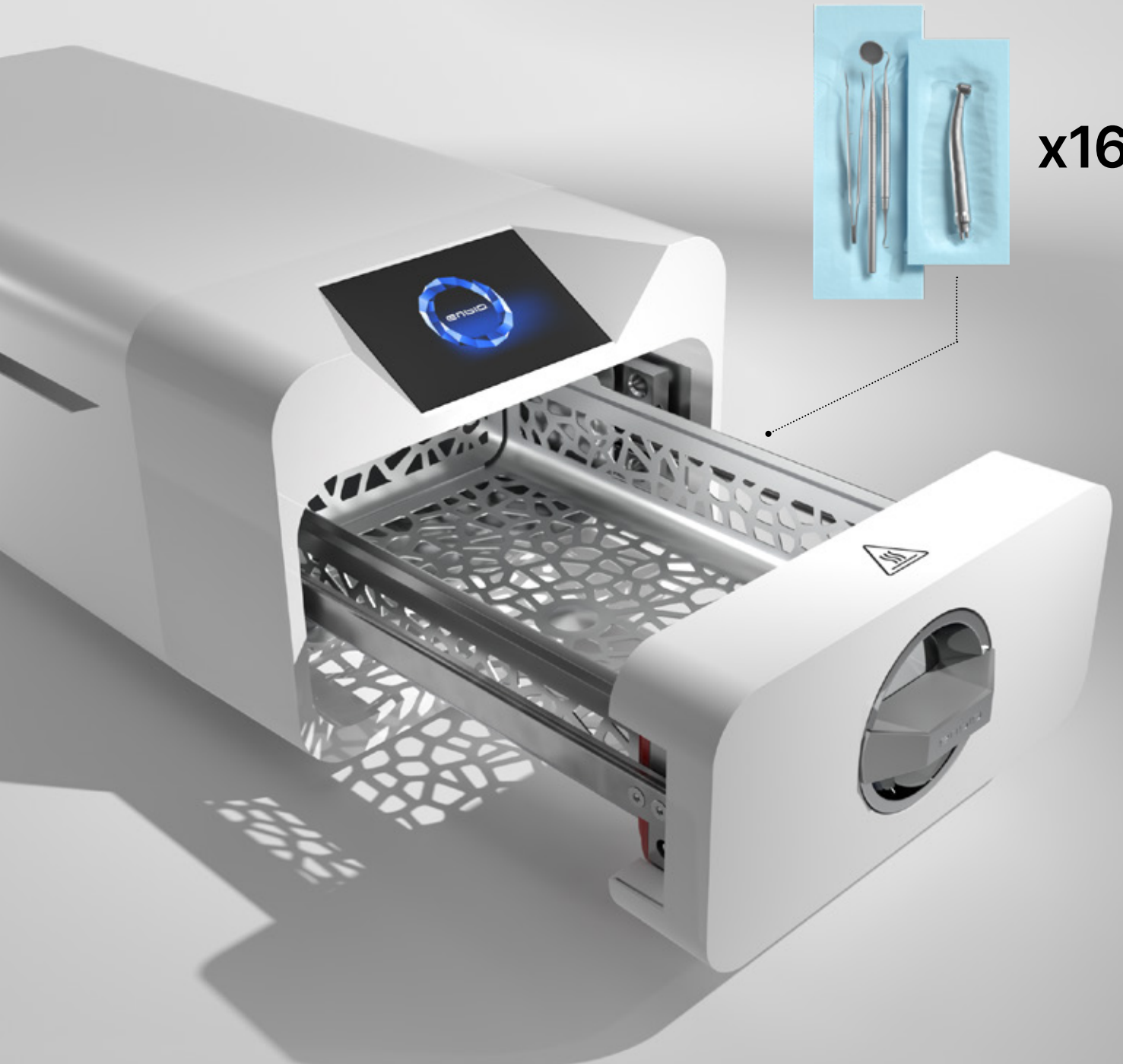
18 min

Wrapped
Class B / 121°C

30 min

Wrapped / PRION
Class B / 134°C

43 min

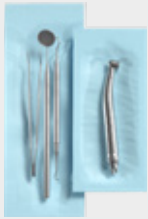


Enbio PRO Autoclave Technical Data



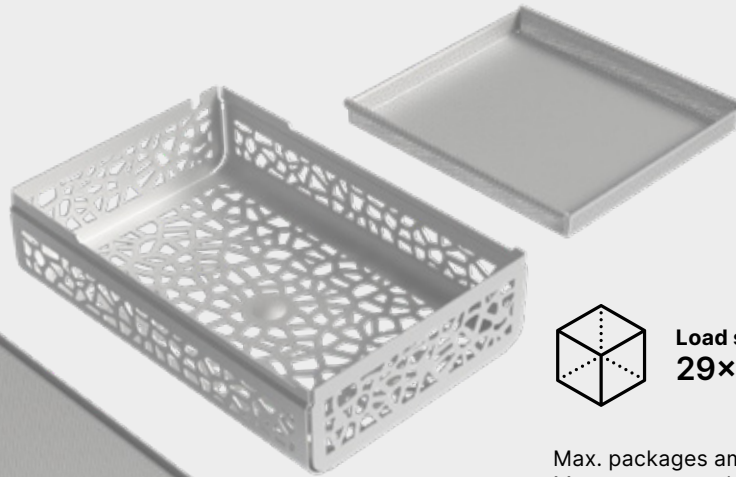
Class B
Vacuum
Pouches+
drying

Capacity

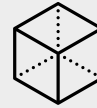


x16

Bottom tray



Top tray
(for small instruments)
20×18×2 cm



Load space
29×19×8 cm

Max. packages amount (circa) **16**
Max. recommended batch weight **1,0 kg**
Process chamber volume **5,3 l**



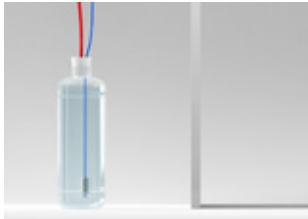
Power supply

Enbio PRO works with any typical electrical outlet.



Data archiving

All process data are automatically written to a USB disk.



Water supply

Enbio uses distilled water from external tank. With Enbio Magic Filter, water can be recycled.



Process reports

Enbio Data Viewer (included) allows generating and printing detailed process reports from the data on USB.

Dimensions

56 cm



27 cm



20 cm

Pressure & temperature

Working pressure **2,1 Bar**
Max. pressure **2,3 Bar**
Max. process temperature **137°C**

Electrical

Power supply **230V/50Hz**
Installed power **3250 W**
Max. power consumption **15 A**

Misc

Ingress protection **IP20**
Data archiving **USB**
Water conductivity* **< 15 µS/cm**

* - demineralized water only



Enbio Group AG
Eichengasse 3, 4702 Oensingen
Switzerland

enbio.com

Unwrapped
FAST / 134°C

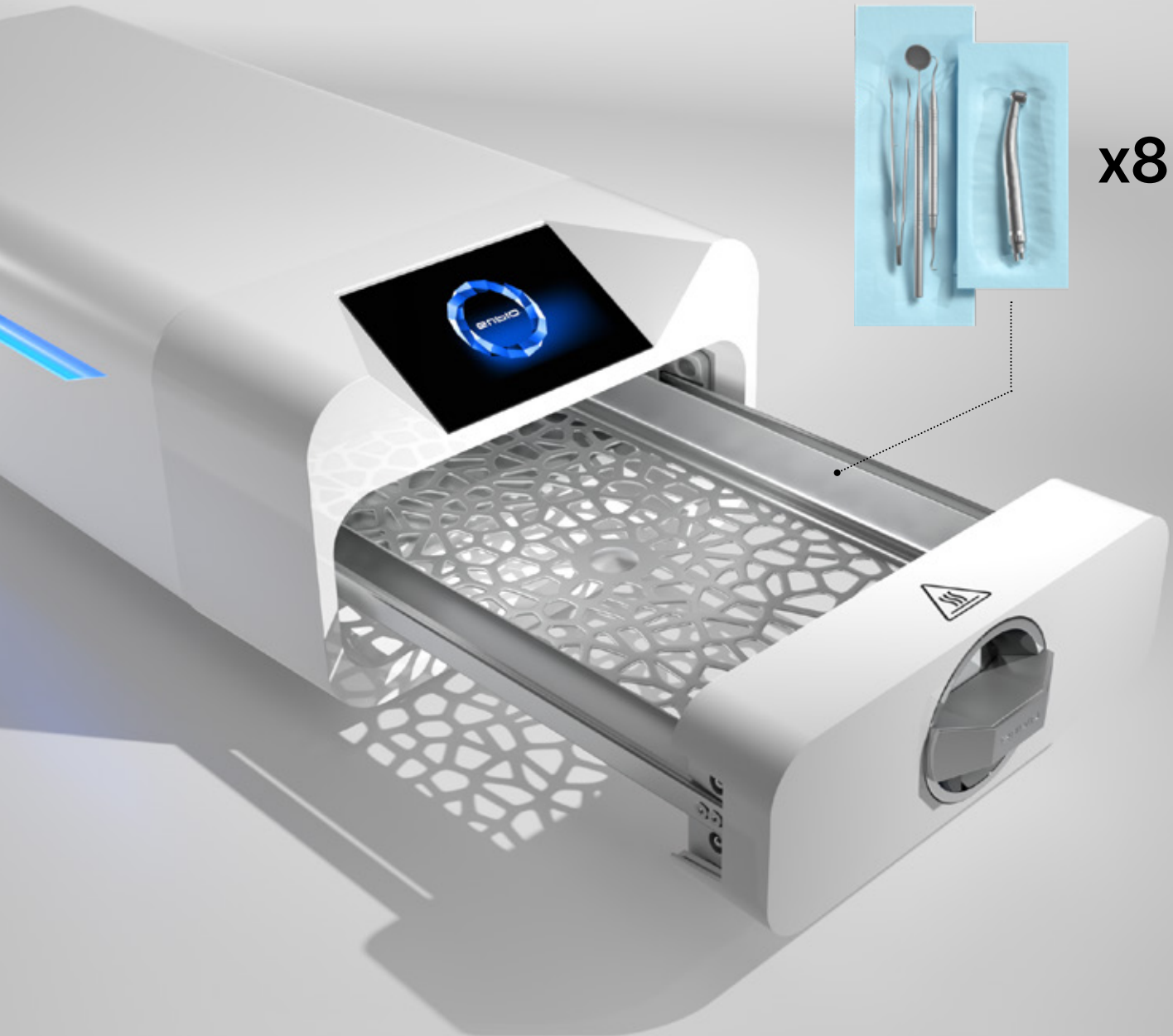
7 min

Wrapped
Class B / 134°C

15 min

Wrapped
Class B / 121°C

30 min

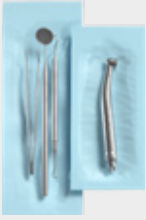


Enbio^S Autoclave Technical Data

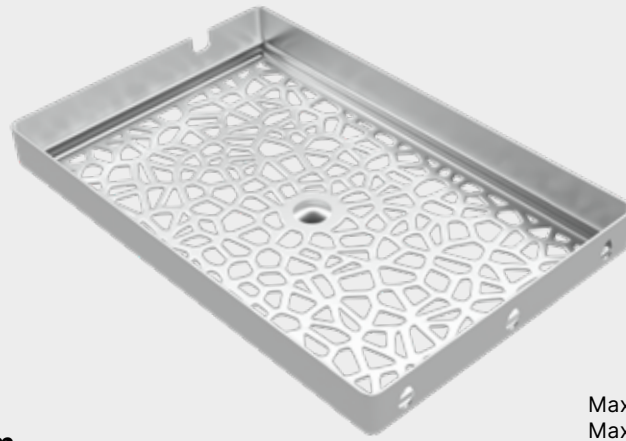


Class B
Vacuum
Pouches+
drying

Capacity



x8



Load space
28x18x3,5 cm

Max. packages amount (circa) **8**
Max. recommended batch weight **0,5 kg**
Process chamber volume **2,7 l**



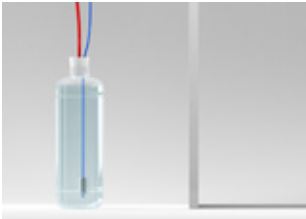
Power supply

Enbio PRO works with any typical electrical outlet.



Data archiving

All process data are automatically written to a USB disk.



Water supply

Enbio uses distilled water from external tank. With Enbio Magic Filter, water can be recycled.



Process reports

Enbio Data Viewer (included) allows generating and printing detailed process reports from the data on USB.

Dimensions



Pressure & temperature

Working pressure **2,1 Bar**
Max. pressure **2,3 Bar**
Max. process temperature **137°C**

Electrical

Power supply **230V/50Hz**
Installed power **2250 W**
Max. power consumption **15 A**

Misc

Ingress protection **IP20**
Data archiving **USB**
Water conductivity* **< 15 µS/cm**

* - demineralized water only



Enbio Group AG
Eichengasse 3, 4702 Oensingen
Switzerland

enbio.com